

THE HILLS AT QUEENS GAP
PHASE III
FOR
WATERFRONT GROUP QUEENS GAP, LLC
 LOCATED IN A PORTION OF LAND LOT 3
 10TH DISTRICT, 1ST SECTION



| | |
|----------|-----------|
| DATE | 12/14/12 |
| COMP BY: | JGH |
| PAG | 2 OF 4 |
| DR. BY: | JGH |
| SHEET: | 2 OF 4 |
| SCALE: | 1" = 100' |
| JOB # | 11001 |

| Course | Bearing | Distance |
|--------|--------------|----------|
| L1 | N 12°54'15"E | 69.19' |
| L2 | N 12°54'15"E | 152.73' |
| L3 | N 85°47'02"E | 69.19' |
| L4 | N 85°47'02"E | 69.19' |
| L5 | N 51°50'03"E | 65.07' |
| L6 | N 51°50'03"E | 65.07' |
| L7 | S 24°07'17"E | 55.30' |
| L8 | S 24°07'17"E | 79.64' |
| L9 | S 14°48'15"W | 111.87' |
| L10 | S 14°48'15"W | 153.52' |
| L11 | S 14°48'15"W | 64.22' |
| L12 | S 14°48'15"W | 64.22' |
| L13 | S 14°48'15"W | 64.22' |
| L14 | S 14°48'15"W | 64.22' |
| L15 | S 14°48'15"W | 64.22' |
| L16 | S 14°48'15"W | 64.22' |
| L17 | S 14°48'15"W | 64.22' |
| L18 | S 14°48'15"W | 64.22' |
| L19 | S 14°48'15"W | 64.22' |
| L20 | S 14°48'15"W | 64.22' |
| L21 | S 14°48'15"W | 64.22' |
| L22 | S 14°48'15"W | 64.22' |
| L23 | S 14°48'15"W | 64.22' |
| L24 | S 14°48'15"W | 64.22' |
| L25 | S 14°48'15"W | 64.22' |
| L26 | S 14°48'15"W | 64.22' |
| L27 | S 14°48'15"W | 64.22' |
| L28 | S 14°48'15"W | 64.22' |

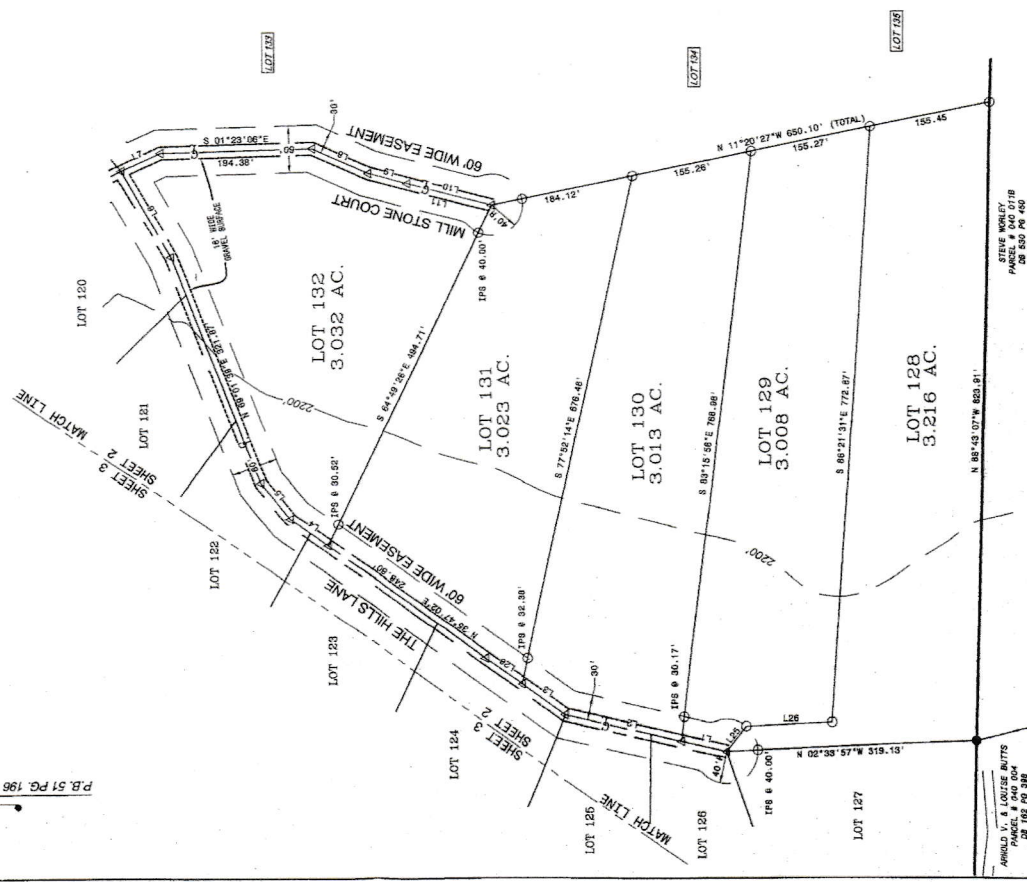
THE FOLLOWING LOTS ARE RESTRICTED BY THE MOUNTAIN PROTECTION ORDINANCE OF UNION COUNTY GEORGIA:
 111-132.
 TOPOGRAPHIC INFORMATION FOR 2200' CONTOUR TAKEN FROM UNION COUNTY GIS SYSTEM.

NO CONSTRUCTION IS ALLOWED ON ANY LOT WITHOUT A BUILDING PERMIT.
 APPROVED BY UNION COUNTY:
 [Signature] DATE: 12/14/12
 UNION COUNTY
 Superior Court Clerk

UNION COUNTY, GEORGIA
 CLERK'S OFFICE SUPERIOR COURT
 FILED FOR RECORD AT 12:20 P.M.
 January 10, 2012, RECORDED
 IN BOOK 714 PAGE 158



- LEGEND**
- - ROW PIN FOUND 1/2" REBAR (UNLESS OTHERWISE NOTED)
 - - 1/2" REBAR SET (UNLESS OTHERWISE NOTED)
 - △ - POINT WHETHER SET OR FOUND
 - - CENTERLINE
 - - CENTERLINE
 - R/W - RIGHT OF WAY
 - MFP - METAL FENCE POST FOUND
 - - 220' CONTOUR LINE



STEVE MORLEY
 PARCEL # 040 0189
 200 500 720 004

ARNOLD V. & LOUISE BUTTS
 PARCEL # 040 004
 200 100 000