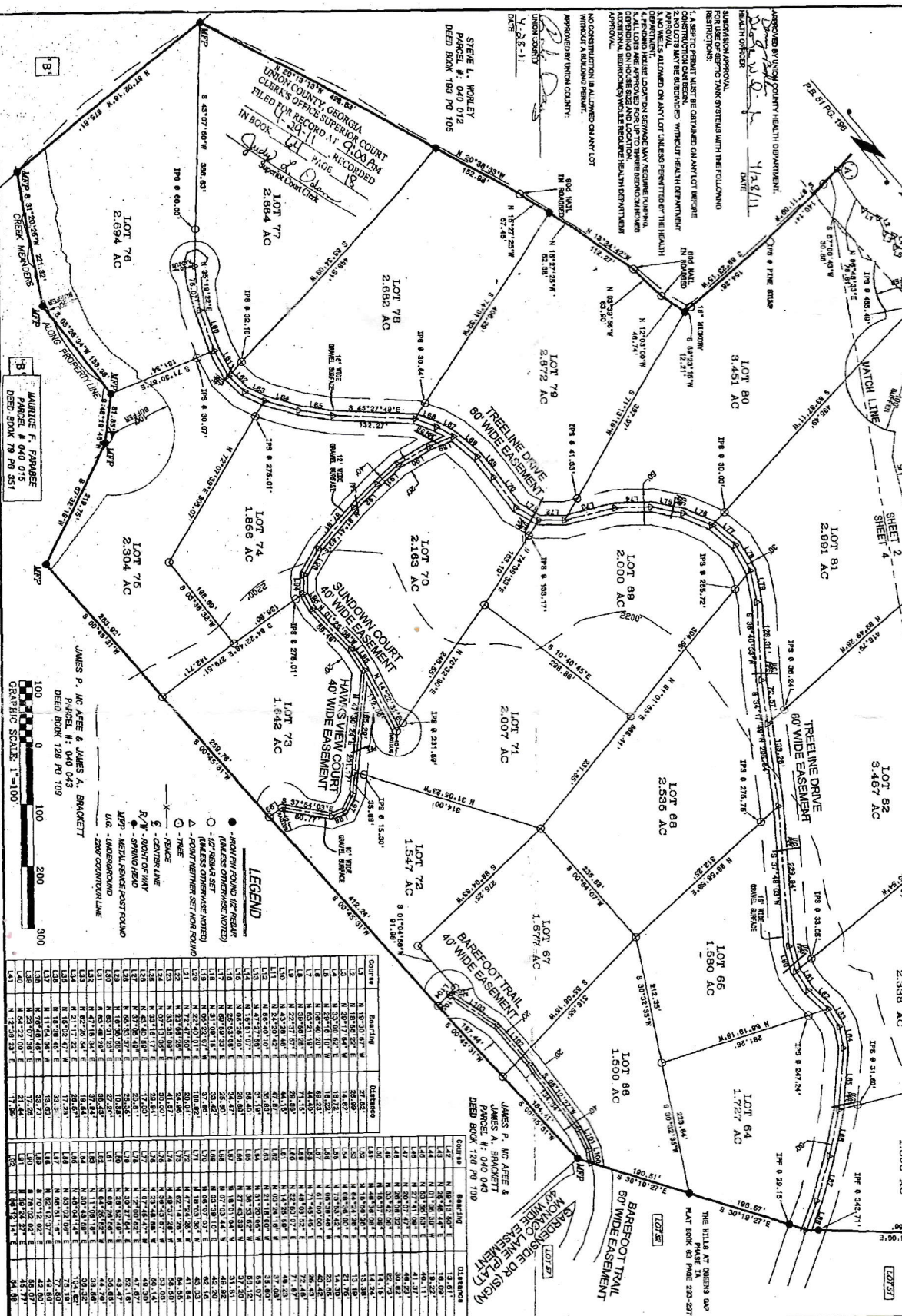


Course	Bearing	Distance
L101	N 71°28'37"E	48.00'
L102	N 12°30'37"E	29.32'
L103	N 08°51'10"E	41.46'
L104	N 88°50'47"E	22.81'
L105	N 88°50'47"E	22.81'
L106	S 88°50'47"E	22.81'
L107	S 88°50'47"E	22.81'
L108	S 88°50'47"E	22.81'
L109	S 88°50'47"E	22.81'
L110	S 88°50'47"E	22.81'
L111	S 88°50'47"E	22.81'
L112	S 88°50'47"E	22.81'
L113	S 88°50'47"E	22.81'
L114	S 88°50'47"E	22.81'
L115	S 88°50'47"E	22.81'
L116	S 88°50'47"E	22.81'
L117	S 88°50'47"E	22.81'
L118	S 88°50'47"E	22.81'
L119	S 88°50'47"E	22.81'
L120	S 88°50'47"E	22.81'

NOTE: POINT 10 PART OF THE CENTER OF THE CREEK IS THE PROPERTY OF THE ESTATE AND DISTANCE SHOWN ARE FOR COMPUTATION OF AREA ONLY. STREAM BERTHS ESTABLISHED BY THE SOIL EROSION CONTROL AND SEDIMENTATION CONTROL ORDINANCE. SEE ALSO THE FOLLOWING ORDINANCES: 1. THE HILLS AT QUEENS GAP SUBDIVISION PROVISION ORDINANCE. 2. THE HILLS AT QUEENS GAP SUBDIVISION PROVISION ORDINANCE. 3. THE HILLS AT QUEENS GAP SUBDIVISION PROVISION ORDINANCE.



Course	Bearing	Distance
L1	N 19°20'57"E	21.82'
L2	N 19°20'57"E	21.82'
L3	N 19°20'57"E	21.82'
L4	N 19°20'57"E	21.82'
L5	N 19°20'57"E	21.82'
L6	N 19°20'57"E	21.82'
L7	N 19°20'57"E	21.82'
L8	N 19°20'57"E	21.82'
L9	N 19°20'57"E	21.82'
L10	N 19°20'57"E	21.82'
L11	N 19°20'57"E	21.82'
L12	N 19°20'57"E	21.82'
L13	N 19°20'57"E	21.82'
L14	N 19°20'57"E	21.82'
L15	N 19°20'57"E	21.82'
L16	N 19°20'57"E	21.82'
L17	N 19°20'57"E	21.82'
L18	N 19°20'57"E	21.82'
L19	N 19°20'57"E	21.82'
L20	N 19°20'57"E	21.82'
L21	N 19°20'57"E	21.82'
L22	N 19°20'57"E	21.82'
L23	N 19°20'57"E	21.82'
L24	N 19°20'57"E	21.82'
L25	N 19°20'57"E	21.82'
L26	N 19°20'57"E	21.82'
L27	N 19°20'57"E	21.82'
L28	N 19°20'57"E	21.82'
L29	N 19°20'57"E	21.82'
L30	N 19°20'57"E	21.82'
L31	N 19°20'57"E	21.82'
L32	N 19°20'57"E	21.82'
L33	N 19°20'57"E	21.82'
L34	N 19°20'57"E	21.82'
L35	N 19°20'57"E	21.82'
L36	N 19°20'57"E	21.82'
L37	N 19°20'57"E	21.82'
L38	N 19°20'57"E	21.82'
L39	N 19°20'57"E	21.82'
L40	N 19°20'57"E	21.82'
L41	N 19°20'57"E	21.82'
L42	N 19°20'57"E	21.82'
L43	N 19°20'57"E	21.82'
L44	N 19°20'57"E	21.82'
L45	N 19°20'57"E	21.82'
L46	N 19°20'57"E	21.82'
L47	N 19°20'57"E	21.82'
L48	N 19°20'57"E	21.82'
L49	N 19°20'57"E	21.82'
L50	N 19°20'57"E	21.82'
L51	N 19°20'57"E	21.82'
L52	N 19°20'57"E	21.82'
L53	N 19°20'57"E	21.82'
L54	N 19°20'57"E	21.82'
L55	N 19°20'57"E	21.82'
L56	N 19°20'57"E	21.82'
L57	N 19°20'57"E	21.82'
L58	N 19°20'57"E	21.82'
L59	N 19°20'57"E	21.82'
L60	N 19°20'57"E	21.82'
L61	N 19°20'57"E	21.82'
L62	N 19°20'57"E	21.82'
L63	N 19°20'57"E	21.82'
L64	N 19°20'57"E	21.82'
L65	N 19°20'57"E	21.82'
L66	N 19°20'57"E	21.82'
L67	N 19°20'57"E	21.82'
L68	N 19°20'57"E	21.82'
L69	N 19°20'57"E	21.82'
L70	N 19°20'57"E	21.82'
L71	N 19°20'57"E	21.82'
L72	N 19°20'57"E	21.82'
L73	N 19°20'57"E	21.82'
L74	N 19°20'57"E	21.82'
L75	N 19°20'57"E	21.82'
L76	N 19°20'57"E	21.82'
L77	N 19°20'57"E	21.82'
L78	N 19°20'57"E	21.82'
L79	N 19°20'57"E	21.82'
L80	N 19°20'57"E	21.82'
L81	N 19°20'57"E	21.82'
L82	N 19°20'57"E	21.82'
L83	N 19°20'57"E	21.82'
L84	N 19°20'57"E	21.82'
L85	N 19°20'57"E	21.82'
L86	N 19°20'57"E	21.82'
L87	N 19°20'57"E	21.82'
L88	N 19°20'57"E	21.82'
L89	N 19°20'57"E	21.82'
L90	N 19°20'57"E	21.82'
L91	N 19°20'57"E	21.82'
L92	N 19°20'57"E	21.82'
L93	N 19°20'57"E	21.82'
L94	N 19°20'57"E	21.82'
L95	N 19°20'57"E	21.82'
L96	N 19°20'57"E	21.82'
L97	N 19°20'57"E	21.82'
L98	N 19°20'57"E	21.82'
L99	N 19°20'57"E	21.82'
L100	N 19°20'57"E	21.82'

COMP BY: DATE:
 PUG: 4/26/2011
 DR BY: SHEET:
 PUG: 4 OF 4
 SCALE: JOB NO.
 P=100' 170008

THE HILLS AT QUEENS GAP
PHASE I B
 FOR
WATERFRONT GROUP QUEENS GAP, LLC
 LOCATED IN PORTIONS OF LAND LOT 3, 4 & 21
 9TH & 10TH DISTRICT, 1ST SECTION
 UNION COUNTY, GEORGIA

PROFESSIONAL LAND SURVEYING SERVICES
 P. O. BOX 125 PHONE: 770-505-8700
 DALLAS, GA 30132 FAX: 770-505-8700